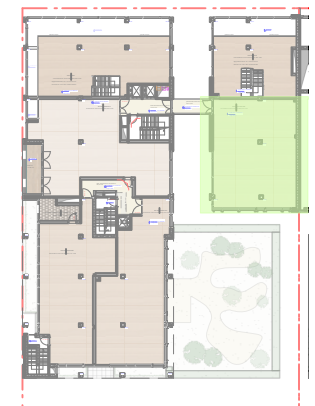


**mezzanine**  
**local bureaux mezz-02 - surface 158.25m<sup>2</sup>**



**BUREAU D'ARCHITECTURE**  
**JEAN-LUC LAMBERT**  
 84, rue Wassertrap  
 L-4408 BELVAUX  
 T : +352 26 55 24 99  
 info@lambert-architectur.lu

**3.000** local bureaux mezz-02  
 23-01-2019 **"THE GATEWAY"**

22, Avenue Monterey  
 L-2163 Luxembourg

Technoconsult 4 s.a.  
 maître d'ouvrage